



# E660 S2: High-precision industrial grid edge sensor

Scalable all-in-one device for billing, power quality monitoring and edge intelligence.

The E660 S2 is a smart, transformer-connected electricity meter, designed for high-end commercial and industrial applications. Its dual modularity concept, combined with remote FW upgrades, give flexibility and scalability to support current and future use cases and communication technologies.

The E66C communication modules suite, with its protocol conversion capabilities, enables simultaneous communication to different head-end and SCADA systems.

E660 S2 enhanced power quality functionalities allows improvements in network operation and planning, as well as outage prevention by early detection of voltage issues and slowly developing faults.

With PQ class S certification, E660 S2 is a all-in-one device for billing, power quality monitoring, DER management, Distribution Automation.

In addition, licensing enables targeted and cost-effective feature deployment.

- Versatile transformer connectivity
- Accuracy class: up to 0.2 S for active energy, 0.5 S for reactive energy
- Dual modularity (I/O extension board and communication unit)
- Replaceable battery and auxiliary power supply
- Power quality class S certification
- High-level ingress protection rating (IP54) and anti-tampering functionalities
- Data push capabilities
- High level security



## Base meter I/Os

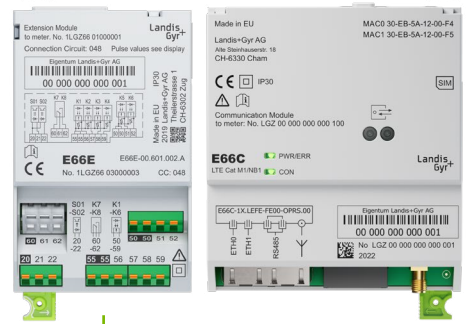
- 3 control inputs
- 2 solid state outputs

## Modular communication units – E66C

- E66C 3xRS-485, 2x Ethernet
- E66C 1xRS-485, 2x Ethernet, LTE Cat-M1/NB-IoT
- E66C 1xRS-485, 2x Ethernet, LTE Cat1/2G

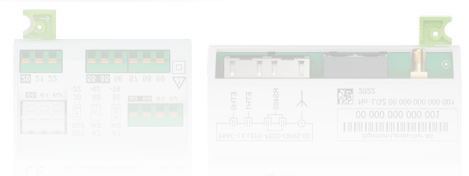
## Multi-protocol support:

- IEC 62056 DLMS-COSEM
- IEC 61158 Modbus
- IEC 60780-5-104 SCADA
- IEC 61850



## Modular I/Os – E66E extension board

- 2x S0 inputs
- 6x outputs (solid-state relays)
- 1x output (latching relay)



- 1 Optical test outputs and optical button
- 2 Warning and alarm LEDs
- 3 Display navigation buttons
- 4 Sealable battery and reset button compartment
- 5 Dot-matrix display
- 6 Certification seal and additional customer seal (optional)



## Terminal cover options

- Terminal cover 40mm - light grey
- Terminal cover 40mm - transparent
- Terminal cover 60mm - light grey
- Terminal cover 60mm - transparent
- Terminal cover 80mm - light grey
- Terminal cover 110mm - light grey

## Let's Build a Brighter Future Together.

Since 1896, Landis+Gyr has been a global leader of energy management solutions. We've provided more than 3,500 utility companies all over the world with the broadest portfolio of products and services in the industry. With a worldwide team of 1,300+ engineers and research professionals, as well as an ISO certification for quality and environmental processes, we are committed to improving energy efficiency, streamlining operations, and improving customer service for utility providers.